

**REMARKS:**  
 1. THIS PLAT IS THE RESULT OF A SURVEY MADE BY THE ENGINEER AND HIS ASSISTANTS IN ACCORDANCE WITH THE PROVISIONS OF CHAPTER 173, F.S., AND THE RULES AND REGULATIONS OF THE BOARD OF PROFESSIONAL ENGINEERS, FLORIDA.  
 2. THE SURVEY WAS MADE BY THE ENGINEER AND HIS ASSISTANTS IN ACCORDANCE WITH THE PROVISIONS OF CHAPTER 173, F.S., AND THE RULES AND REGULATIONS OF THE BOARD OF PROFESSIONAL ENGINEERS, FLORIDA.  
 3. THE SURVEY WAS MADE BY THE ENGINEER AND HIS ASSISTANTS IN ACCORDANCE WITH THE PROVISIONS OF CHAPTER 173, F.S., AND THE RULES AND REGULATIONS OF THE BOARD OF PROFESSIONAL ENGINEERS, FLORIDA.

**DESCRIPTION:**  
 THIS PLAT IS THE RESULT OF A SURVEY MADE BY THE ENGINEER AND HIS ASSISTANTS IN ACCORDANCE WITH THE PROVISIONS OF CHAPTER 173, F.S., AND THE RULES AND REGULATIONS OF THE BOARD OF PROFESSIONAL ENGINEERS, FLORIDA.  
 THE SURVEY WAS MADE BY THE ENGINEER AND HIS ASSISTANTS IN ACCORDANCE WITH THE PROVISIONS OF CHAPTER 173, F.S., AND THE RULES AND REGULATIONS OF THE BOARD OF PROFESSIONAL ENGINEERS, FLORIDA.

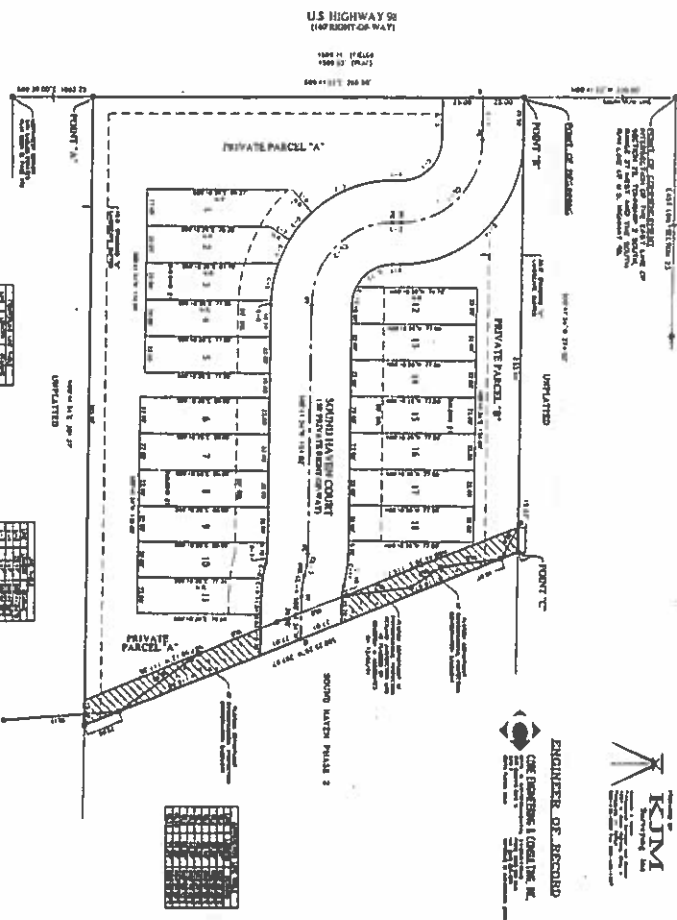
**THESE ARE THE CORNER POINTS OF THE SUBDIVISION:**  
 THE CORNER POINTS OF THE SUBDIVISION ARE AS SHOWN ON THIS PLAT AND ARE TO BE MARKED BY IRON PIPES OR IRON BOLTS SET IN CONCRETE OR BY IRON PIPES OR IRON BOLTS SET IN CONCRETE.

**NOTICE:**  
 THIS PLAT IS THE RESULT OF A SURVEY MADE BY THE ENGINEER AND HIS ASSISTANTS IN ACCORDANCE WITH THE PROVISIONS OF CHAPTER 173, F.S., AND THE RULES AND REGULATIONS OF THE BOARD OF PROFESSIONAL ENGINEERS, FLORIDA.  
 THE SURVEY WAS MADE BY THE ENGINEER AND HIS ASSISTANTS IN ACCORDANCE WITH THE PROVISIONS OF CHAPTER 173, F.S., AND THE RULES AND REGULATIONS OF THE BOARD OF PROFESSIONAL ENGINEERS, FLORIDA.

Lot No.	Area (Acres)	Area (Sq. Ft.)	Front Footage (Feet)	Side Footage (Feet)	Rear Footage (Feet)	Other Footage (Feet)
1	0.12	8,100	120	150	150	150
2	0.12	8,100	120	150	150	150
3	0.12	8,100	120	150	150	150
4	0.12	8,100	120	150	150	150
5	0.12	8,100	120	150	150	150
6	0.12	8,100	120	150	150	150
7	0.12	8,100	120	150	150	150
8	0.12	8,100	120	150	150	150
9	0.12	8,100	120	150	150	150
10	0.12	8,100	120	150	150	150
11	0.12	8,100	120	150	150	150
12	0.12	8,100	120	150	150	150
13	0.12	8,100	120	150	150	150
14	0.12	8,100	120	150	150	150
15	0.12	8,100	120	150	150	150
16	0.12	8,100	120	150	150	150
17	0.12	8,100	120	150	150	150
18	0.12	8,100	120	150	150	150
19	0.12	8,100	120	150	150	150
20	0.12	8,100	120	150	150	150
21	0.12	8,100	120	150	150	150
22	0.12	8,100	120	150	150	150
23	0.12	8,100	120	150	150	150
24	0.12	8,100	120	150	150	150
25	0.12	8,100	120	150	150	150
26	0.12	8,100	120	150	150	150
27	0.12	8,100	120	150	150	150
28	0.12	8,100	120	150	150	150
29	0.12	8,100	120	150	150	150
30	0.12	8,100	120	150	150	150
31	0.12	8,100	120	150	150	150
32	0.12	8,100	120	150	150	150
33	0.12	8,100	120	150	150	150
34	0.12	8,100	120	150	150	150
35	0.12	8,100	120	150	150	150
36	0.12	8,100	120	150	150	150
37	0.12	8,100	120	150	150	150
38	0.12	8,100	120	150	150	150
39	0.12	8,100	120	150	150	150
40	0.12	8,100	120	150	150	150
41	0.12	8,100	120	150	150	150
42	0.12	8,100	120	150	150	150
43	0.12	8,100	120	150	150	150
44	0.12	8,100	120	150	150	150
45	0.12	8,100	120	150	150	150
46	0.12	8,100	120	150	150	150
47	0.12	8,100	120	150	150	150
48	0.12	8,100	120	150	150	150
49	0.12	8,100	120	150	150	150
50	0.12	8,100	120	150	150	150

# A FINAL PLAT OF SOUND HAVEN PHASE 1

A SUBDIVISION OF A PORTION OF  
 SECTION 23, TOWNSHIP 2 SOUTH, RANGE 27 WEST,  
 SANTA ROSA COUNTY, FLORIDA  
 FLU. RES. & COMM. ZONED: HCD  
 APRIL 2010



**OWNER AND DEVELOPER:**  
 SANTA ROSA COUNTY, FLORIDA  
 1000 W. WASHINGTON STREET  
 TALLAHASSEE, FLORIDA 32301



**ENGINEER OF RECORD:**  
 CURE ENGINEERING CONSULTING INC.  
 1000 W. WASHINGTON STREET  
 TALLAHASSEE, FLORIDA 32301

**STATEMENT OF WORK:**  
 I, the undersigned, have prepared this plat in accordance with the provisions of Chapter 173, F.S., and the Rules and Regulations of the Board of Professional Engineers, Florida. I am a duly licensed Professional Engineer in the State of Florida, No. 12345, and I am not providing any services to the owner or developer in connection with this plat.

**REMARKS:**  
 THIS PLAT IS THE RESULT OF A SURVEY MADE BY THE ENGINEER AND HIS ASSISTANTS IN ACCORDANCE WITH THE PROVISIONS OF CHAPTER 173, F.S., AND THE RULES AND REGULATIONS OF THE BOARD OF PROFESSIONAL ENGINEERS, FLORIDA.

**NOTICE:**  
 THIS PLAT IS THE RESULT OF A SURVEY MADE BY THE ENGINEER AND HIS ASSISTANTS IN ACCORDANCE WITH THE PROVISIONS OF CHAPTER 173, F.S., AND THE RULES AND REGULATIONS OF THE BOARD OF PROFESSIONAL ENGINEERS, FLORIDA.

**PLAT BOOK 11 PAGE 54**