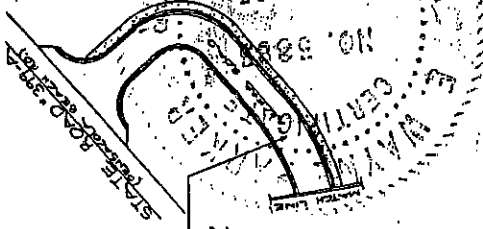


OR
BOOK **581** PAGE **78**
SANTA ROSA COUNTY, FLA.

EXHIBIT 1

SURVEY AND BUILDING FLOOR PLANS



C. Wayne Baker 5/12/82

SURVEYOR'S CERTIFICATE

1. THE INFORMATION ON THIS PLAN WAS OBTAINED FROM THE FOLLOWING SOURCES:

1. THE RECORDS OF THE PUBLIC RECORDS DEPARTMENT OF SANTA ROSA COUNTY, FLORIDA, SHOWING THE LOCATION, LOCATION, AND DIMENSIONS OF THE COMMON ELEMENTS AND THE LOCATION, LOCATION, AND DIMENSIONS OF THE COMMON ELEMENTS AND THE LOCATION, LOCATION, AND DIMENSIONS OF THE COMMON ELEMENTS.
2. THE RECORDS OF THE PUBLIC RECORDS DEPARTMENT OF SANTA ROSA COUNTY, FLORIDA, SHOWING THE LOCATION, LOCATION, AND DIMENSIONS OF THE COMMON ELEMENTS AND THE LOCATION, LOCATION, AND DIMENSIONS OF THE COMMON ELEMENTS.
3. THE RECORDS OF THE PUBLIC RECORDS DEPARTMENT OF SANTA ROSA COUNTY, FLORIDA, SHOWING THE LOCATION, LOCATION, AND DIMENSIONS OF THE COMMON ELEMENTS AND THE LOCATION, LOCATION, AND DIMENSIONS OF THE COMMON ELEMENTS.
4. THE RECORDS OF THE PUBLIC RECORDS DEPARTMENT OF SANTA ROSA COUNTY, FLORIDA, SHOWING THE LOCATION, LOCATION, AND DIMENSIONS OF THE COMMON ELEMENTS AND THE LOCATION, LOCATION, AND DIMENSIONS OF THE COMMON ELEMENTS.
5. THE RECORDS OF THE PUBLIC RECORDS DEPARTMENT OF SANTA ROSA COUNTY, FLORIDA, SHOWING THE LOCATION, LOCATION, AND DIMENSIONS OF THE COMMON ELEMENTS AND THE LOCATION, LOCATION, AND DIMENSIONS OF THE COMMON ELEMENTS.

2. THE INFORMATION ON THIS PLAN WAS OBTAINED FROM THE FOLLOWING SOURCES:

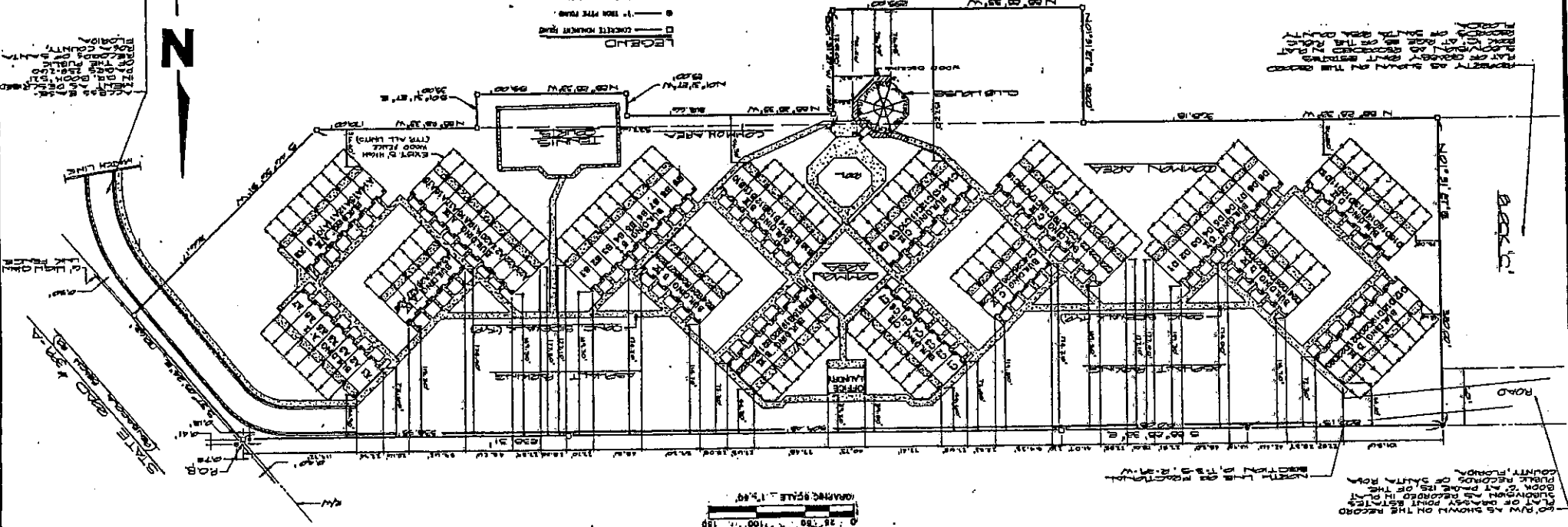
1. THE RECORDS OF THE PUBLIC RECORDS DEPARTMENT OF SANTA ROSA COUNTY, FLORIDA, SHOWING THE LOCATION, LOCATION, AND DIMENSIONS OF THE COMMON ELEMENTS AND THE LOCATION, LOCATION, AND DIMENSIONS OF THE COMMON ELEMENTS.
2. THE RECORDS OF THE PUBLIC RECORDS DEPARTMENT OF SANTA ROSA COUNTY, FLORIDA, SHOWING THE LOCATION, LOCATION, AND DIMENSIONS OF THE COMMON ELEMENTS AND THE LOCATION, LOCATION, AND DIMENSIONS OF THE COMMON ELEMENTS.
3. THE RECORDS OF THE PUBLIC RECORDS DEPARTMENT OF SANTA ROSA COUNTY, FLORIDA, SHOWING THE LOCATION, LOCATION, AND DIMENSIONS OF THE COMMON ELEMENTS AND THE LOCATION, LOCATION, AND DIMENSIONS OF THE COMMON ELEMENTS.
4. THE RECORDS OF THE PUBLIC RECORDS DEPARTMENT OF SANTA ROSA COUNTY, FLORIDA, SHOWING THE LOCATION, LOCATION, AND DIMENSIONS OF THE COMMON ELEMENTS AND THE LOCATION, LOCATION, AND DIMENSIONS OF THE COMMON ELEMENTS.
5. THE RECORDS OF THE PUBLIC RECORDS DEPARTMENT OF SANTA ROSA COUNTY, FLORIDA, SHOWING THE LOCATION, LOCATION, AND DIMENSIONS OF THE COMMON ELEMENTS AND THE LOCATION, LOCATION, AND DIMENSIONS OF THE COMMON ELEMENTS.

GENERAL NOTES

1. THE SURVEY WAS MADE IN ACCORDANCE WITH THE PROVISIONS OF CHAPTER 173, F.S., AND THE RULES AND REGULATIONS OF THE BOARD OF SURVEYING AND MAPPING.
2. THE SURVEY WAS MADE IN ACCORDANCE WITH THE PROVISIONS OF CHAPTER 173, F.S., AND THE RULES AND REGULATIONS OF THE BOARD OF SURVEYING AND MAPPING.
3. THE SURVEY WAS MADE IN ACCORDANCE WITH THE PROVISIONS OF CHAPTER 173, F.S., AND THE RULES AND REGULATIONS OF THE BOARD OF SURVEYING AND MAPPING.
4. THE SURVEY WAS MADE IN ACCORDANCE WITH THE PROVISIONS OF CHAPTER 173, F.S., AND THE RULES AND REGULATIONS OF THE BOARD OF SURVEYING AND MAPPING.
5. THE SURVEY WAS MADE IN ACCORDANCE WITH THE PROVISIONS OF CHAPTER 173, F.S., AND THE RULES AND REGULATIONS OF THE BOARD OF SURVEYING AND MAPPING.

LEGEND

- 1 - 1" IN CONCRETE MOUNTAIN ROAD
- 2 - 1" IN CONCRETE MOUNTAIN ROAD
- 3 - 1" IN CONCRETE MOUNTAIN ROAD
- 4 - 1" IN CONCRETE MOUNTAIN ROAD
- 5 - 1" IN CONCRETE MOUNTAIN ROAD



SANTA ROSA COUNTY, FLORIDA
IN A PORTION OF FRACTIONAL SECTION 10, TOWNSHIP-3-SOUTH, RANGE-29-WEST

BAHAMA BAY CLUB TOWNHOMES, A CONDOMINIUM

PREPARED BY:
 ASBURYVILLE
 ENGINEERS, INC.
 1000 W. BAYVIEW BLVD.
 SUITE 100
 ASBURYVILLE, FLORIDA 32909

A CONDOMINIUM PLAT BOOK PAGE 3



DESCRIPTION

UNIT 101: 1,000 SQ. FT. (APPROXIMATE)

UNIT 102: 1,000 SQ. FT. (APPROXIMATE)

UNIT 103: 1,000 SQ. FT. (APPROXIMATE)

UNIT 104: 1,000 SQ. FT. (APPROXIMATE)

UNIT 105: 1,000 SQ. FT. (APPROXIMATE)

UNIT 106: 1,000 SQ. FT. (APPROXIMATE)

UNIT 107: 1,000 SQ. FT. (APPROXIMATE)

UNIT 108: 1,000 SQ. FT. (APPROXIMATE)

UNIT 109: 1,000 SQ. FT. (APPROXIMATE)

UNIT 110: 1,000 SQ. FT. (APPROXIMATE)

UNIT 111: 1,000 SQ. FT. (APPROXIMATE)

UNIT 112: 1,000 SQ. FT. (APPROXIMATE)

UNIT 113: 1,000 SQ. FT. (APPROXIMATE)

UNIT 114: 1,000 SQ. FT. (APPROXIMATE)

UNIT 115: 1,000 SQ. FT. (APPROXIMATE)

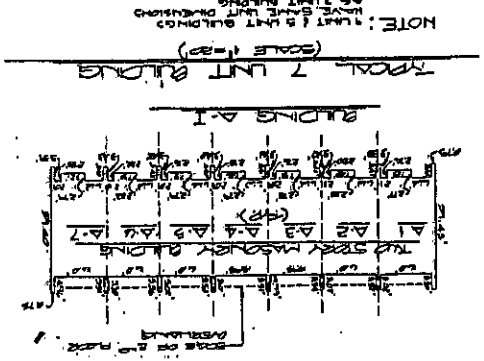
UNIT 116: 1,000 SQ. FT. (APPROXIMATE)

UNIT 117: 1,000 SQ. FT. (APPROXIMATE)

UNIT 118: 1,000 SQ. FT. (APPROXIMATE)

UNIT 119: 1,000 SQ. FT. (APPROXIMATE)

UNIT 120: 1,000 SQ. FT. (APPROXIMATE)



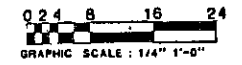
NOTE: UNIT 7 UNIT BUILDING
 HAVE SAME UNIT DIMENSIONS
 AS UNIT BUILDING



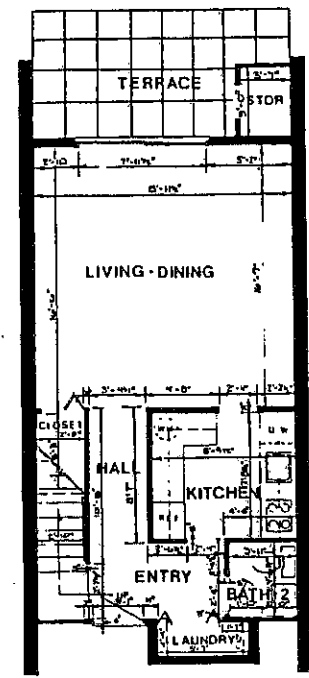
BAHAMA BAY CLUB TOWNHOMES, A CONDOMINIUM

IN A PORTION OF FRACTIONAL SECTION 10, TOWNSHIP-3-SOUTH, RANGE-29-WEST
SANTA ROSA COUNTY, FLORIDA

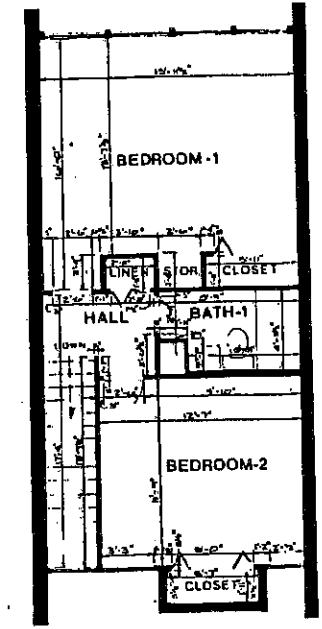
PREPARED BY
ASKERVILLE
DONOVAN
ENGINEERS, INC.
LAND SURVEYORS
LAND PLANNERS
PROFESSIONAL ENGINEERS
IN THE STATE OF FLORIDA, P. 1000



OR
BOOK 581 PAGE 80
SANTA ROSA COUNTY, FLA.



FIRST FLOOR PLAN



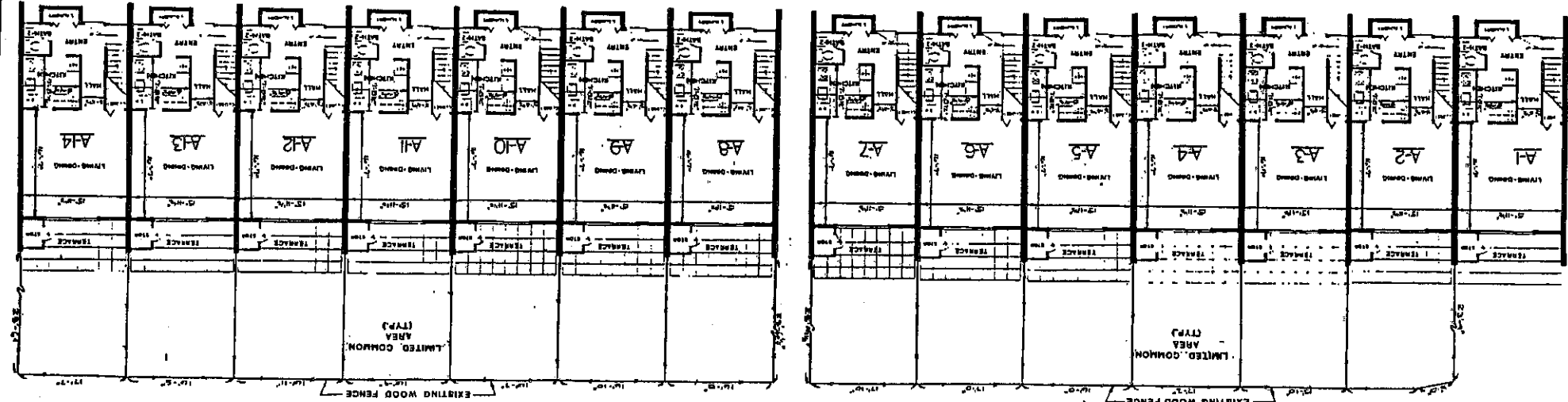
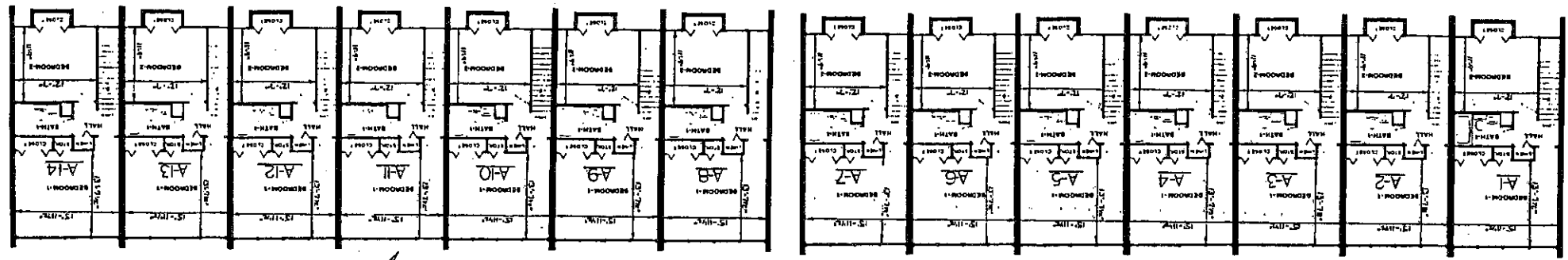
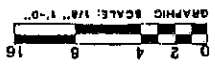
SECOND FLOOR PLAN

TYPICAL FLOOR PLAN OF BUILDINGS A-I THRU A-IV
UNITS 1-28



BAHAMA BAY CLUB TOWNHOMES, A CONDOMINIUM

IN A PORTION OF FRACTIONAL SECTION 10, TOWNSHIP-3-SOUTH, RANGE-29-WEST
SANTA ROSA COUNTY, FLORIDA



OR BOOK 581 PAGE 81
SANTA ROSA COUNTY, FLA.

NOTES: THE SPACES AS SHOWN HEREON ARE NOT TO SCALE.

OVERALL PLAN BUILDINGS A-I A-II

BUILDING A-I FIRST FLOOR PLAN
BUILDING A-II FIRST FLOOR PLAN

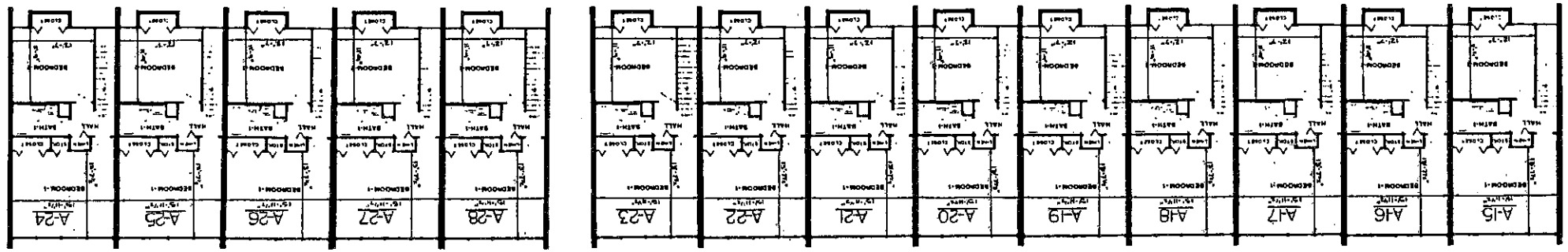
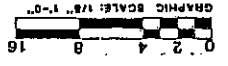
PREPARED BY:
ASKERVILLE
ENGINEERS, INC.

LAND SURVEYOR
LAWYER
PROFESSIONAL ENGINEER



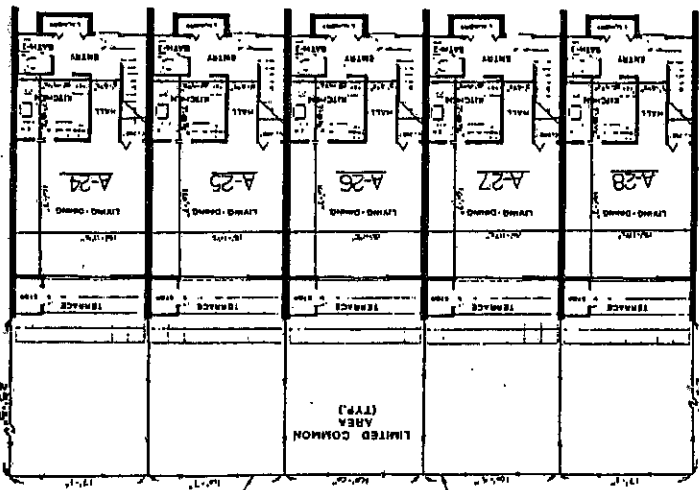
BAHAMA BAY CLUB TOWNHOMES, A CONDOMINIUM

IN A PORTION OF FRACTIONAL SECTION 10, TOWNSHIP-3-SOUTH, RANGE-29-WEST
SANTA ROSA COUNTY, FLORIDA

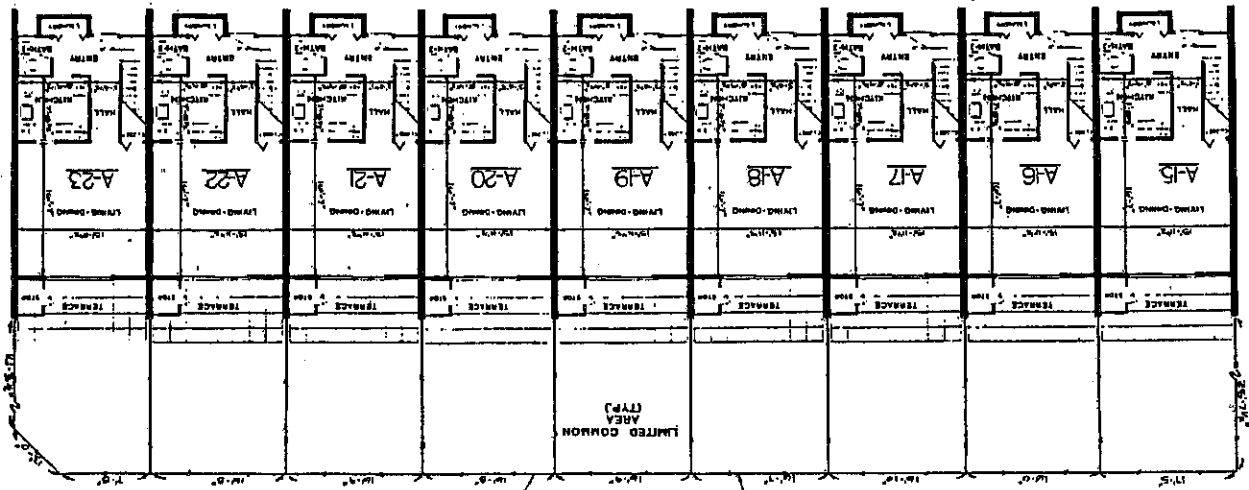


BUILDING A-II

SECOND FLOOR PLAN



BUILDING A-IV



BUILDING A-III

FIRST FLOOR PLAN

OVERALL PLAN BUILDINGS A-III A-IV

NOTE: THE FENCES AS SHOWN
ARE NOT TO SCALE

SHEET 4 OF 12

EXHIBIT 1

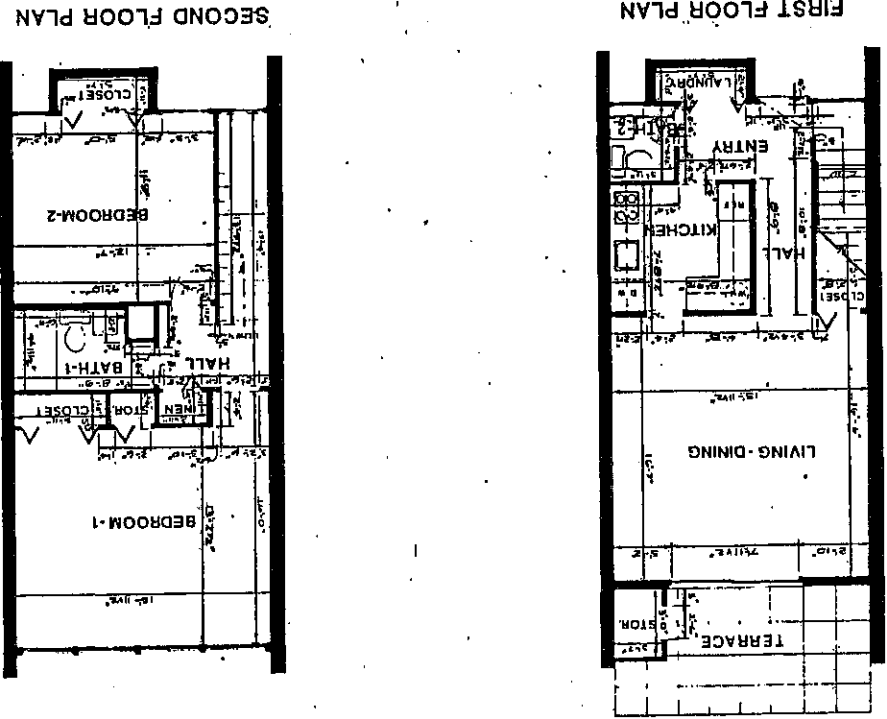
BOOK 581 PAGE 82
SANTA ROSA COUNTY, FLA.

A CONDOMINIUM PLAT BOOK PAGE 35
ASKEVILLE
DONOVAN ENGINEERS, INC.
LAND SURVEYORS
PROFESSIONAL LAND SURVEYORS
FLORIDA LICENSE NO. 12543



BAHAMA BAY CLUB TOWNHOMES, A CONDOMINIUM

IN A PORTION OF FRACTIONAL SECTION 10, TOWNSHIP-3-SOUTH, RANGE-29-WEST,
SANTA ROSA COUNTY, FLORIDA



TYPICAL FLOOR PLAN OF UNITS 1 THRU 28, OF BUILDINGS B-1 THRU B-IX,
C-1 THRU C-IV, D-1 THRU D-IX

GR BOOK 581 PAGE 83
SANTA ROSA COUNTY, FLA.

PREPARED BY
ASKRIVILLE
LAND SURVEYORS
AND ENGINEERS, INC.

PREPARED BY:

ASKERVILLE

LAND PLANNING

ENGINEERS, INC.

REGISTERED PROFESSIONAL ENGINEERS

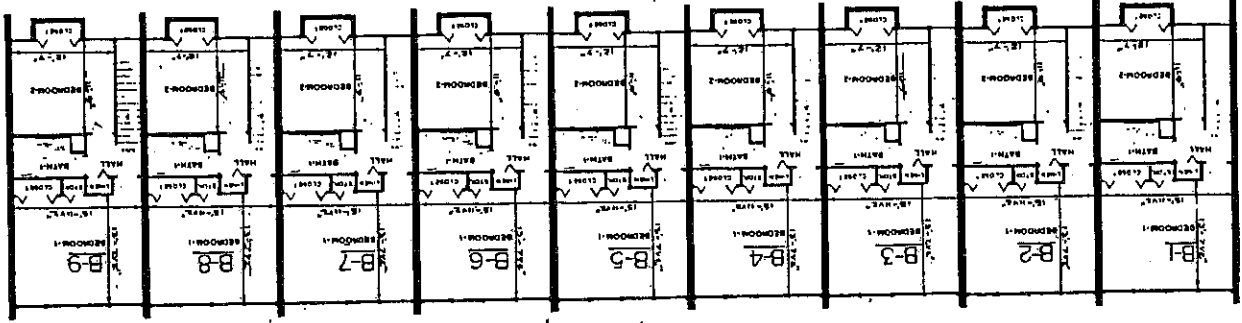
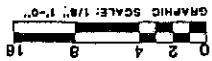
FLORIDA

NO. 10000

BAHAMA BAY CLUB TOWNHOMES, A CONDOMINIUM

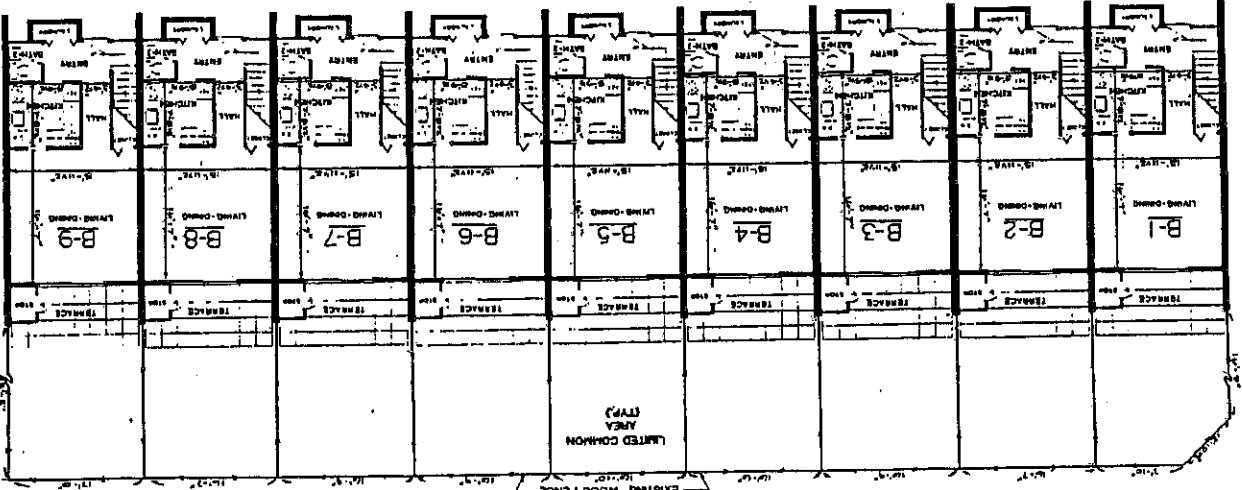
IN A PORTION OF FRACTIONAL SECTION 10, TOWNSHIP-3-SOUTH, RANGE-29-WEST.

SANTA ROSA COUNTY, FLORIDA



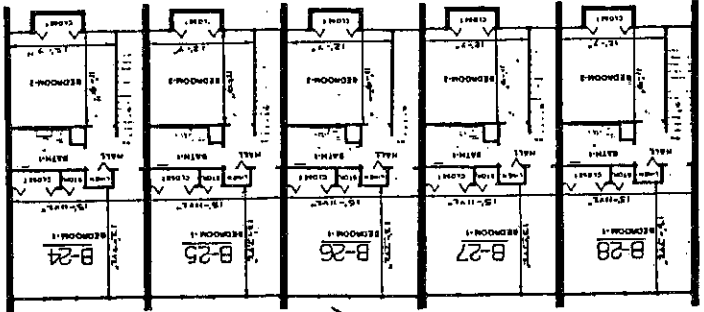
SECOND FLOOR PLAN

BUILDING B-I

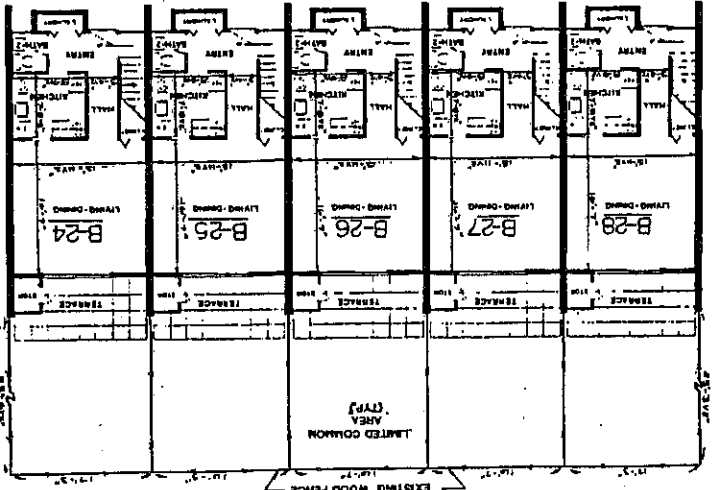


FIRST FLOOR PLAN

BUILDING B-I



BUILDING B-IV



BUILDING B-IV

OVERALL PLAN, BUILDINGS B-I B-IV

NOTE: THE FENCES AS SHOWN HEREON ARE NOT TO SCALE.



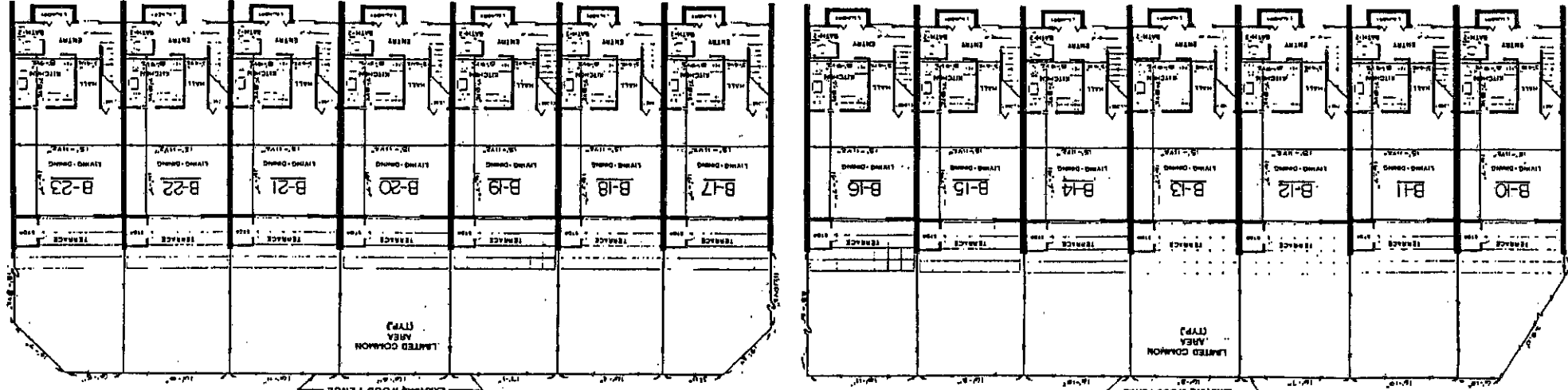
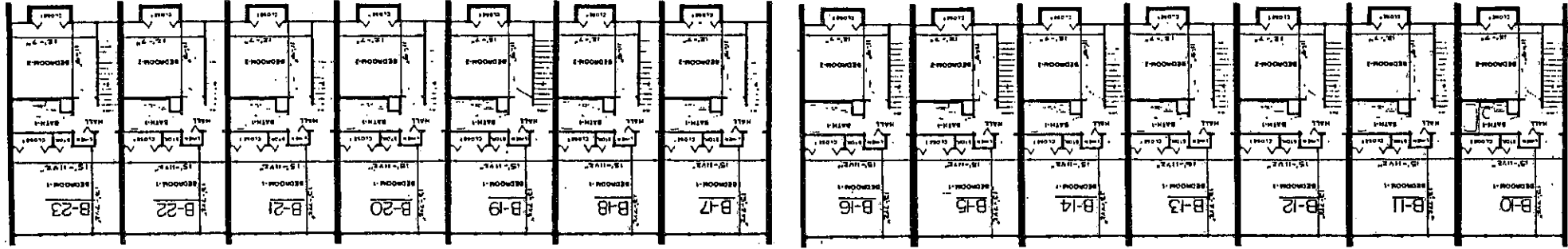
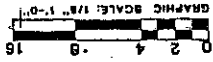
PREPARED BY:

ASKERVILLE
ENGINEERS, INC.

1000 W. UNIVERSITY
SUITE 100
ORLANDO, FLORIDA 32801
TEL: 305-222-1111

BAHAMAMA BAY CLUB TOWNHOMES, A CONDOMINIUM

IN A PORTION OF FRACTIONAL SECTION 10, TOWNSHIP-3-SOUTH, RANGE-29-WEST,
SANTA ROSA COUNTY, FLORIDA



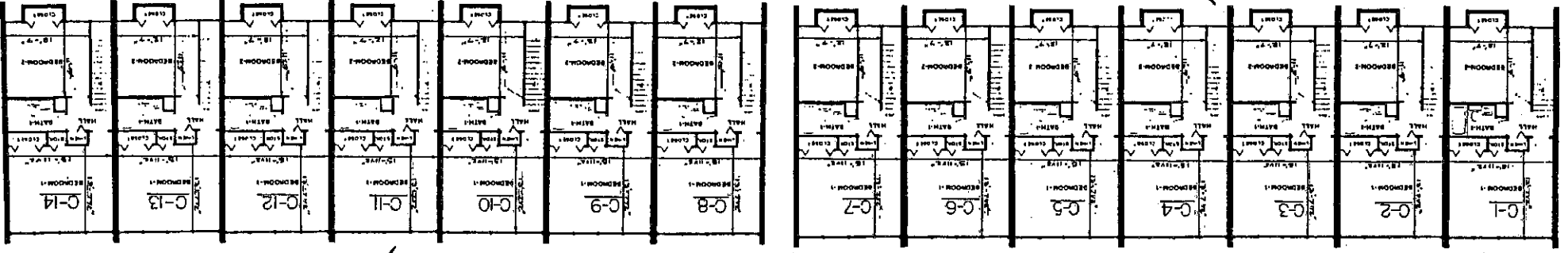
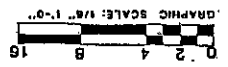
OVERALL PLAN, BUILDINGS B-II-B-III

HOTELING PERMITS AS SHOWN
REASON: AREA NOT TO SCALE

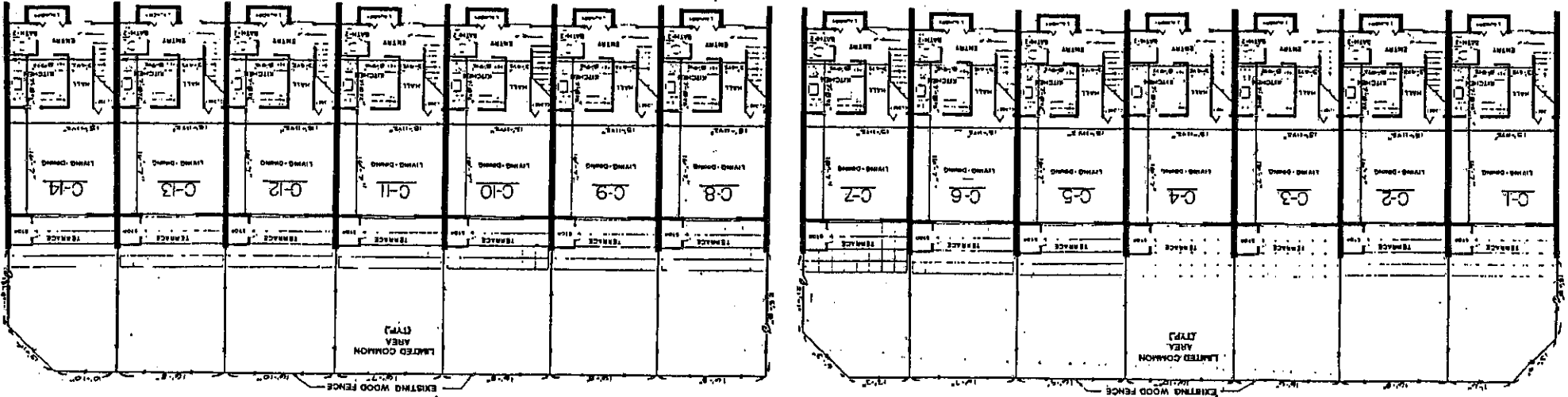


**BAHAMA BAY CLUB
 TOWNHOMES, A CONDOMINIUM**

IN A PORTION OF FRACTIONAL SECTION 10, TOWNSHIP-3-SOUTH, RANGE-29-WEST 1
 SANTA ROSA COUNTY, FLORIDA



SECOND FLOOR PLAN



FIRST FLOOR PLAN

OVERALL PLAN BUILDINGS C-I-C-II

NOTE: THE PERCENTAGE SHOWN HEREON, SHALL NOT BE SCALE

PREPARED BY:
 ASKEVILLE
 LAND PLANNERS
 ENGINEERS, INC.



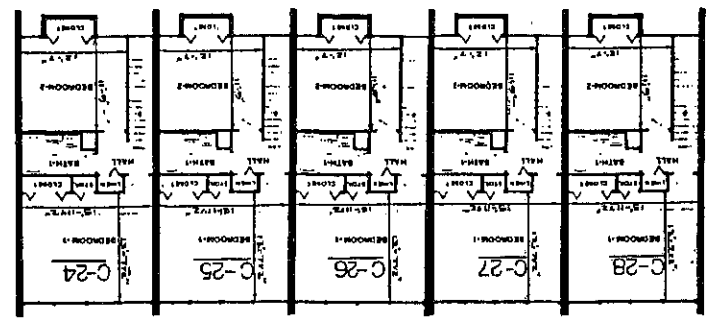
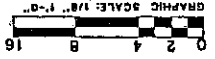
BAHAMA BAY CLUB TOWNHOMES, A CONDOMINIUM

PREPARED BY:
BANKERVILLE
AND PARTNERS
ENGINEERS, INC.

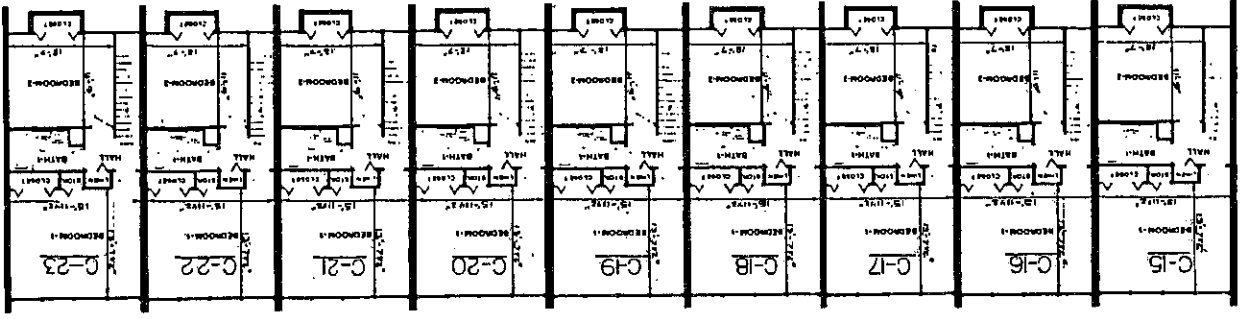
LAND SURVEYORS
REGISTERED PROFESSIONAL ENGINEERS
AND ARCHITECTS IN FLORIDA

CONDOMINIUM PLAT BOOK PAGE 34

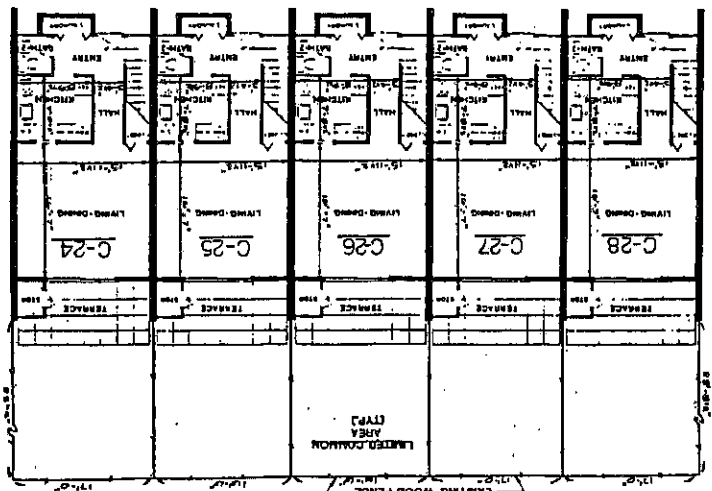
IN A PORTION OF FRACTIONAL SECTION 10, TOWNSHIP-3-SOUTH, RANGE-29-WEST
SANTA ROSA COUNTY, FLORIDA



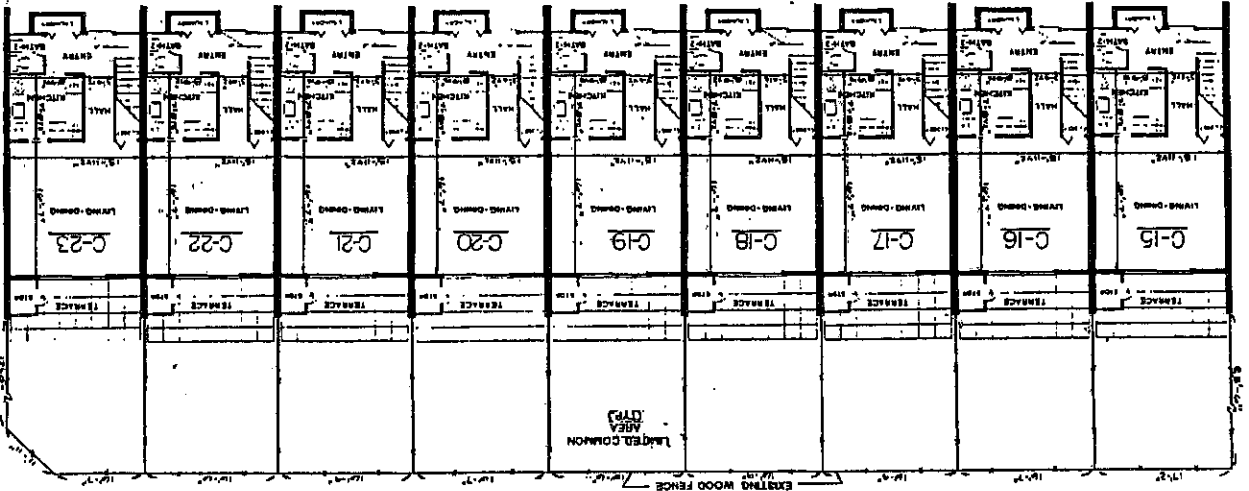
BUILDING C-IV
SECOND FLOOR PLAN



BUILDING C-III
SECOND FLOOR PLAN



BUILDING C-IV
FIRST FLOOR PLAN



BUILDING C-III
FIRST FLOOR PLAN

NOTE: THE FLOOR AREA SHOWN
HEREON APPLIES TO THE FLOOR

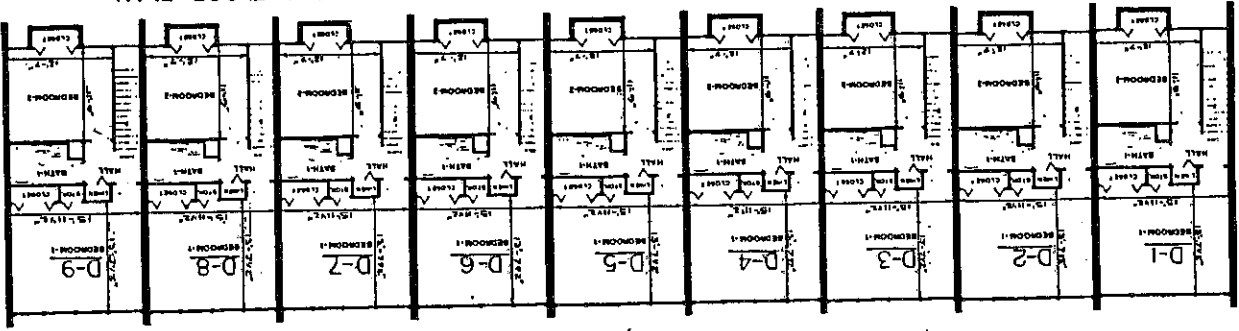
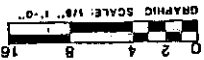
OVERALL PLAN, BUILDINGS C-III C-IV



BAHAMA BAY CLUB TOWNHOMES, A CONDOMINIUM

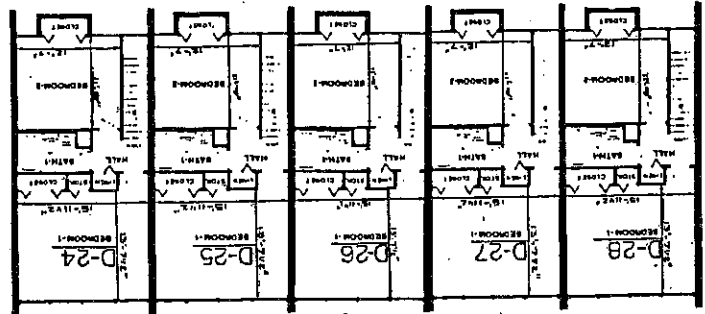
IN A PORTION OF FRACTIONAL SECTION 10, TOWNSHIP-3-SOUTH, RANGE-29-WEST

SANTA ROSA COUNTY, FLORIDA

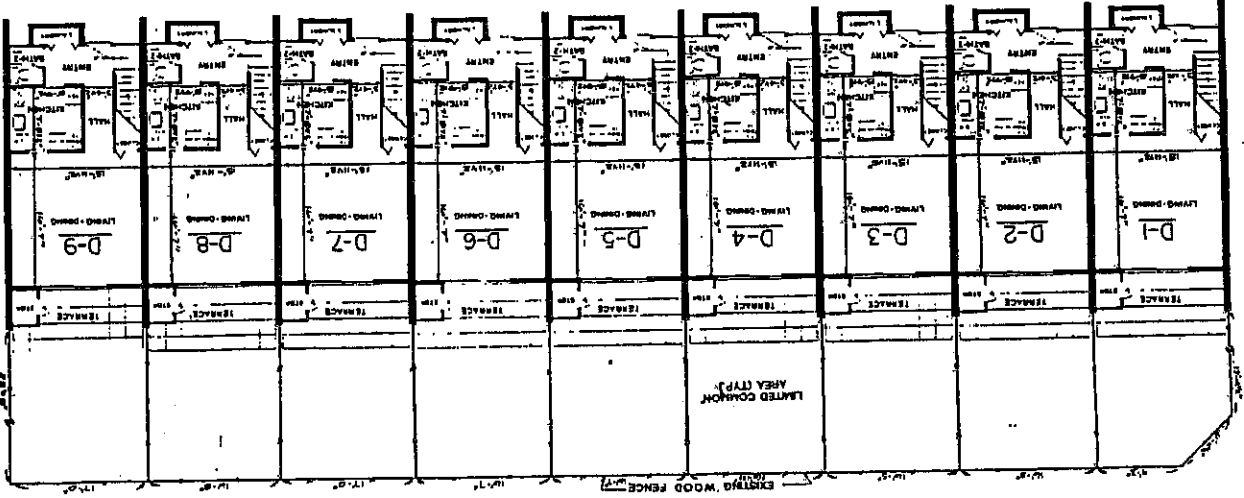


BUILDING D-I

SECOND FLOOR PLAN

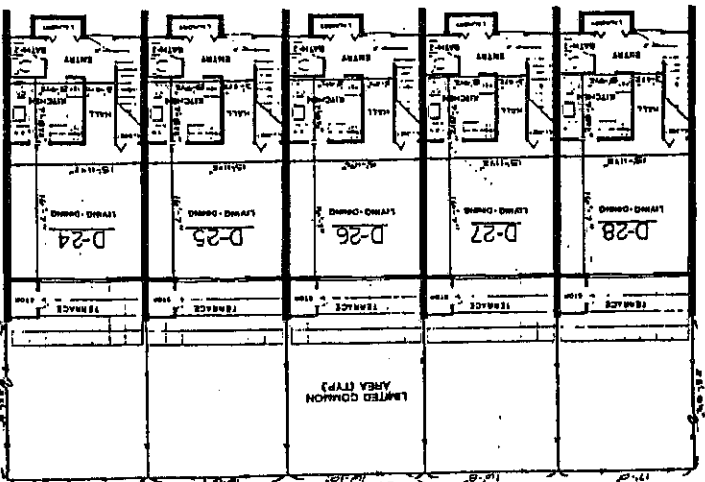


BUILDING D-IV



BUILDING D-I

FIRST FLOOR PLAN



BUILDING D-IV

OVERALL PLAN BUILDINGS D-I, D-IV

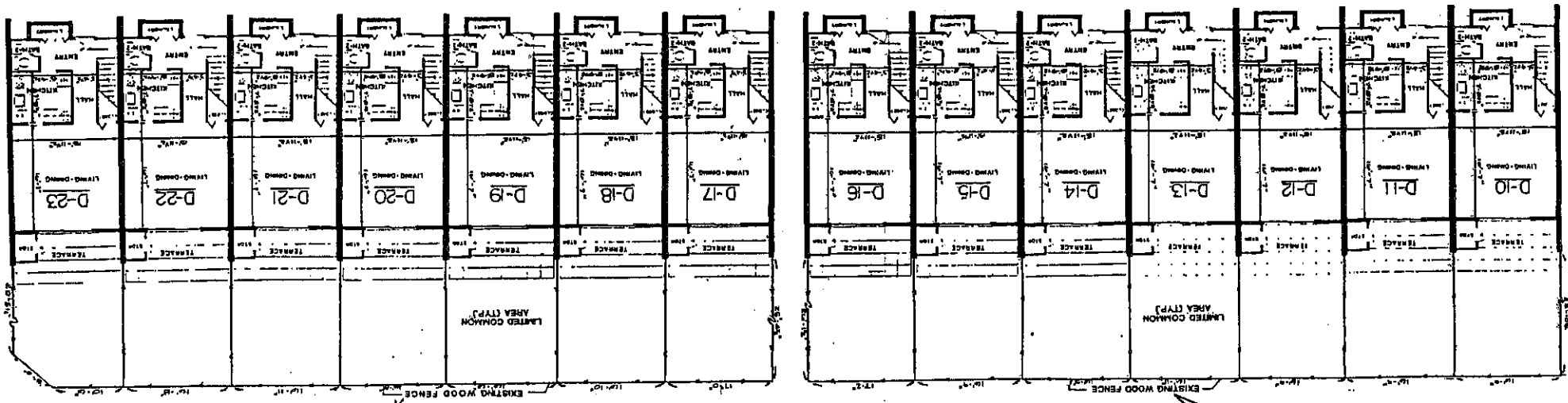
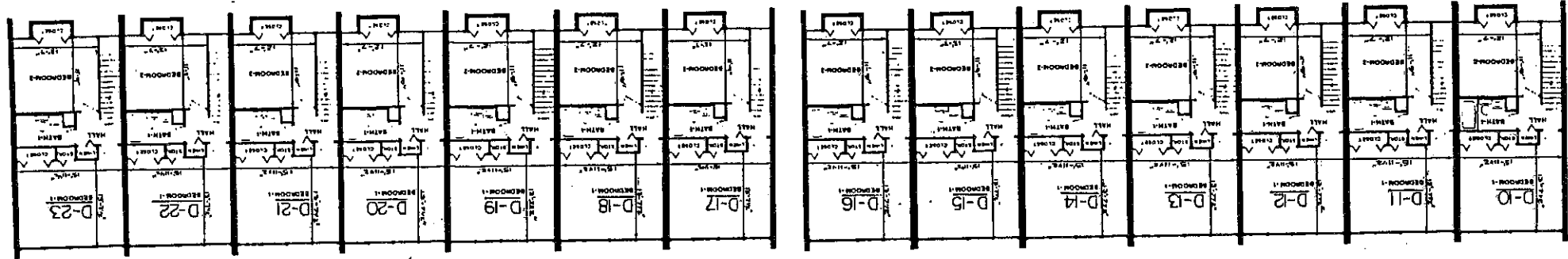
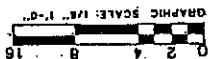
NOTE: THE PRICES AS SHOWN
HEREON ARE NOT TO SCALE

PREPARED BY:
ASKERVILLE
DONOVAN
ENGINEERS, INC.

BAHAMA BAY CLUB TOWNHOMES, A CONDOMINIUM

IN A PORTION OF FRACTIONAL SECTION 10, TOWNSHIP-3-SOUTH, RANGE-29 WEST

SANTA ROSA COUNTY, FLORIDA



SANTA ROSA COUNTY, FLA.
BOOK 581 PAGE 89

OVERALL PLAN BUILDINGS D-II, D-III

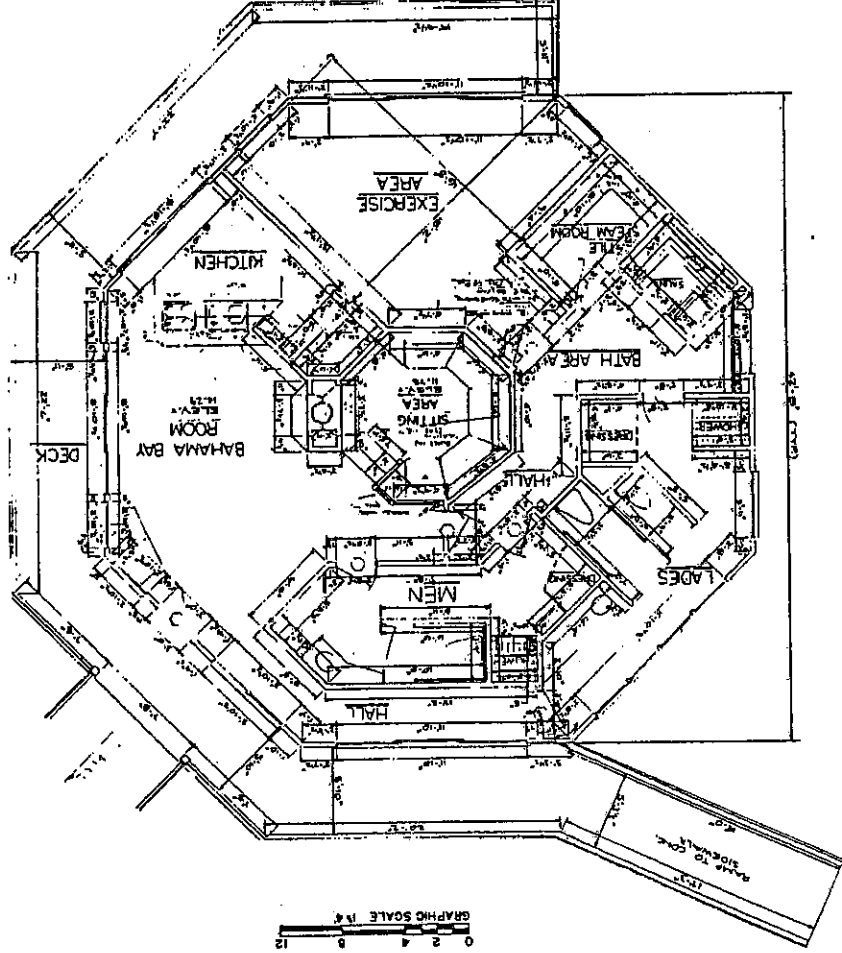
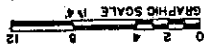
NOTE: THE DIMENSIONS SHOWN HEREON ARE NOT TO SCALE



BAHAMA BAY CLUB TOWNHOMES, A CONDOMINIUM

IN A PORTION OF FRACTIONAL SECTION 10 TOWNSHIP-3 SOUTH RANGE-29-W/51

SANTA ROSA COUNTY, FLORIDA



CLUB HOUSE FLOOR PLAN



PREPARED BY

ASKERVILLE
LAND PLANNERS
ENGINEERS, INC.

1000 UNIVERSITY BLVD., SUITE 100
SANTA ROSA COUNTY, FLORIDA 32751



BAHAMA BAY CLUB TOWNHOMES, A CONDOMINIUM

IN A PORTION OF FRACTIONAL SECTION 10, TOWNSHIP-3-SOUTH, RANGE-29-WEST
SANTA ROSA COUNTY, FLORIDA

SANTA ROSA COUNTY, FLA.
BOOK 581 PAGE 91
OR

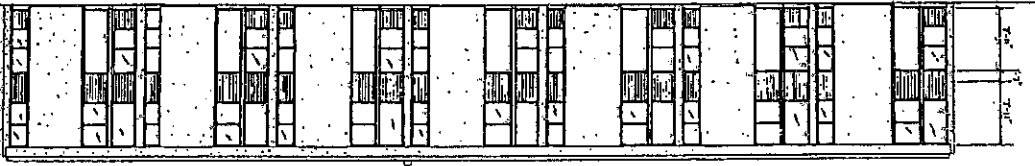
A CONDOMINIUM PLAT BOOK PAGE 31

PREPARED BY:

ASKENVILLE
ANDERSON
ENGINEERS, INC.

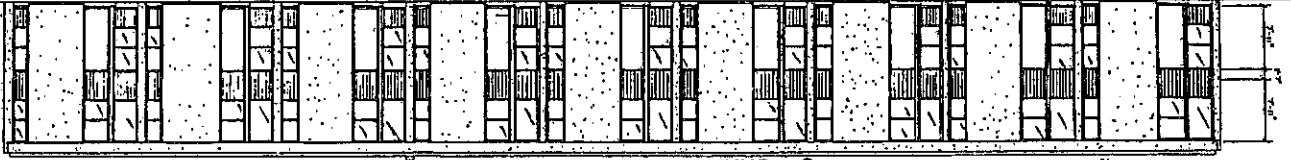
LAND SURVEYORS
PROFESSIONAL REGISTERED
SANTA ROSA COUNTY, FLORIDA

7 - UNIT BUILDING ELEVATION



A TYPICAL 7-UNIT BUILDING (BUILDINGS A-I, A-II, B-I, B-II, B-III, C-I, C-II, D-I, D-II, D-III)
INCLUDES: A1-A2, A8-A14, B10-B16, B17-B23,
C1-C2, C8-C14, D10-D16, D17-D23
SCALE 1/8" = 1'-0"

9 - UNIT BUILDING ELEVATION



A TYPICAL 9-UNIT BUILDING (BUILDINGS A-III, B-I, C-III, D-I)
INCLUDES: A15-A23, B1-B9, C15-C23, D1-D9
SCALE 1/8" = 1'-0"

5 - UNIT BUILDING ELEVATION

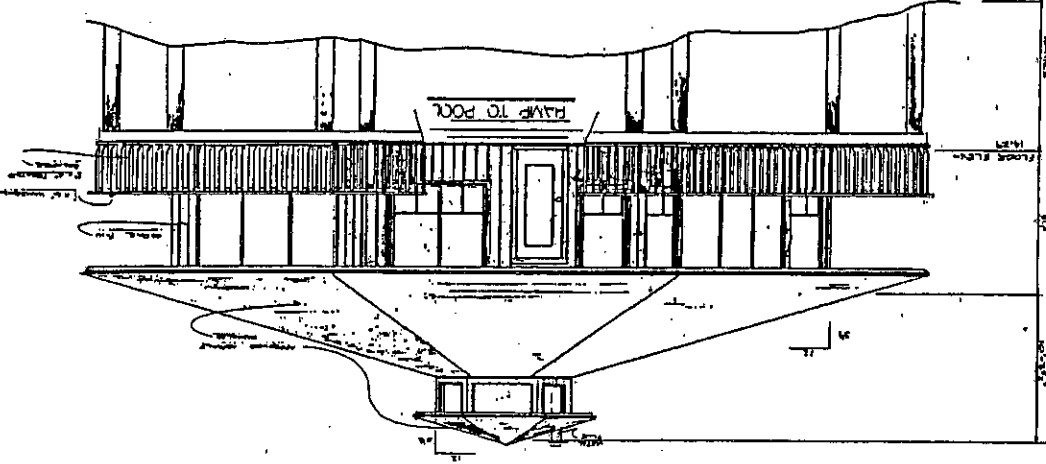


A TYPICAL 5-UNIT BUILDING (BUILDINGS A-IV, B-IV, C-IV, D-IV)
INCLUDES: A24-28, B24-B28, C24-C28, D24-D28
SCALE 1/8" = 1'-0"

MARKED FLOOR ELEVATIONS

BUILDING	FLOOR	ELEVATION
A-I	FIRST	10.00
A-I	SECOND	20.00
A-II	FIRST	10.00
A-II	SECOND	20.00
A-III	FIRST	10.00
A-III	SECOND	20.00
A-IV	FIRST	10.00
A-IV	SECOND	20.00
B-I	FIRST	15.00
B-I	SECOND	25.00
B-II	FIRST	15.00
B-II	SECOND	25.00
B-III	FIRST	15.00
B-III	SECOND	25.00
C-I	FIRST	14.00
C-I	SECOND	24.00
C-II	FIRST	14.00
C-II	SECOND	24.00
C-III	FIRST	14.00
C-III	SECOND	24.00
C-IV	FIRST	14.00
C-IV	SECOND	24.00
D-I	FIRST	14.00
D-I	SECOND	24.00
D-II	FIRST	14.00
D-II	SECOND	24.00
D-III	FIRST	14.00
D-III	SECOND	24.00
D-IV	FIRST	14.00
D-IV	SECOND	24.00
CLUB	FLOOR	14.25
OFFICE	FLOOR	18.75

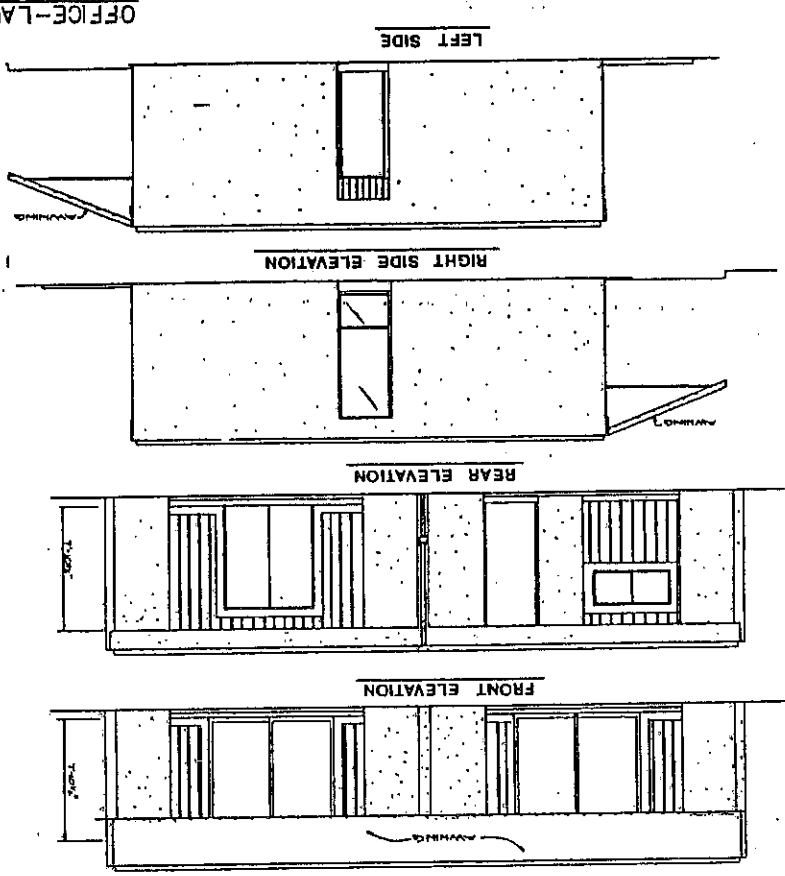
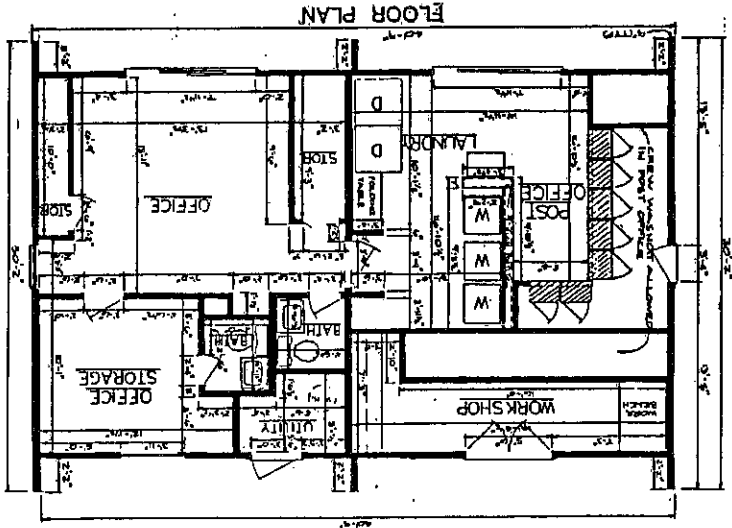
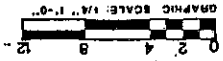
CLUB HOUSE ELEVATION
SCALE 1/4" = 1'-0"





BAHAMA BAY CLUB TOWNHOMES, A CONDOMINIUM

IN A PORTION OF FRACTIONAL SECTION 10, TOWNSHIP-3-SOUTH, RANGE-29-WEST
SANTA ROSA COUNTY, FLORIDA



OFFICE-LAUNDRY-POST OFFICE

FLOOR PLAN

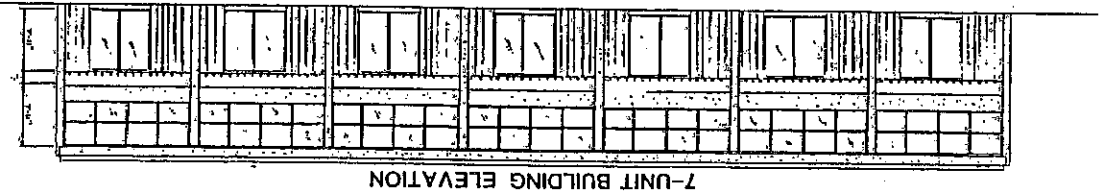
OR BOOK 581 PAGE 93
SANTA ROSA COUNTY, FLA.

PREPARED BY:

ARCHITECTS
ENGINEERS INC.



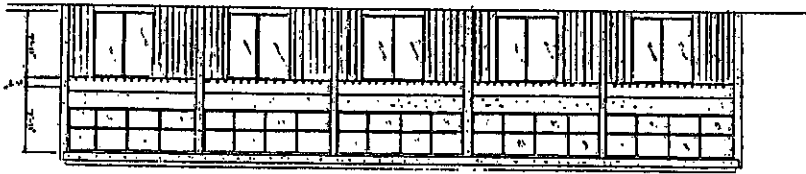
BAHAMA BAY CLUB
TOWNHOMES, A CONDOMINIUM
 IN A PORTION OF FRACTIONAL SECTION 10, TOWNSHIP-3-SOUTH, RANGE-29-WEST
 SANTA ROSA COUNTY, FLORIDA



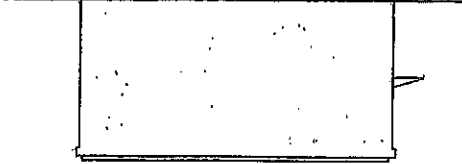
7-UNIT BUILDING ELEVATION



9-UNIT BUILDING ELEVATION



5-UNIT BUILDING ELEVATION



PREPARED BY:

ASKERVILLE
 LAND PLANNERS
 ENGINEERS, INC.
 PROFESSIONAL ENGINEERS
 1000 UNIVERSITY AVENUE, SUITE 1000
 TALLAHASSEE, FLORIDA 32310